



Design Services

WATER
proved
Tailormade Aquaculture

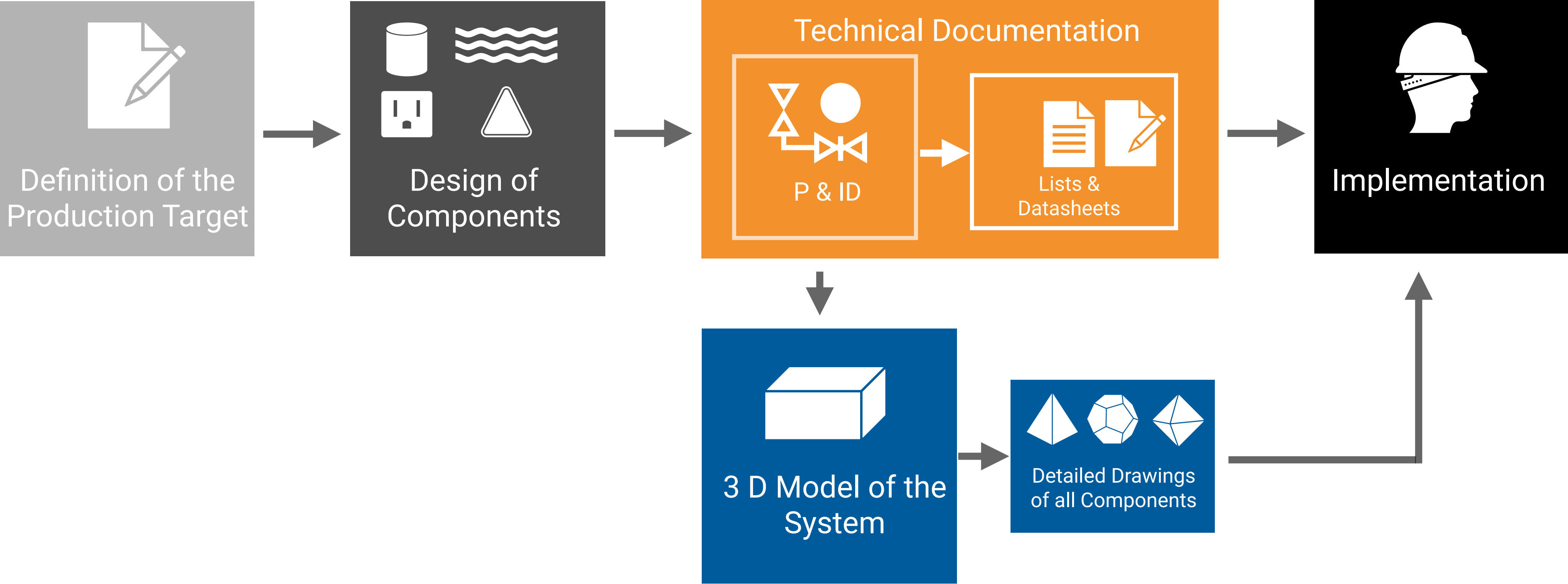
Transparency



The design and construction of fishfarms is a complex task.

It is our declared aim to present all the important steps and modules in detail and transparently.

The Modules of a Project



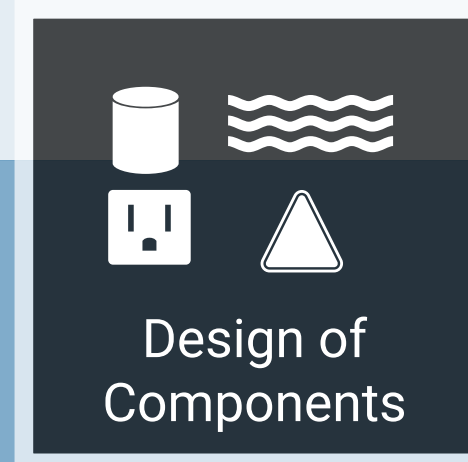
The Project Stages

Stage 1:
Concept &
Design



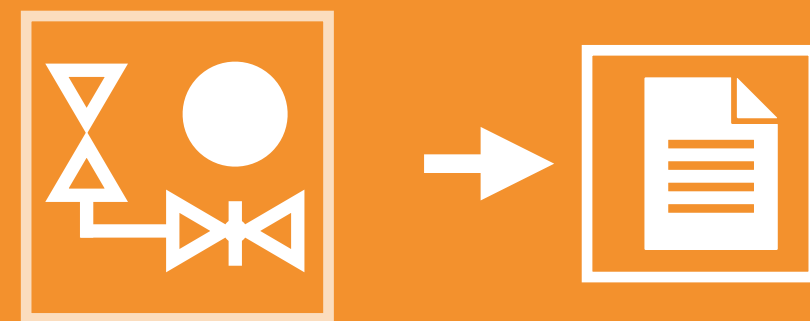
Definition of the
Production Target

Stage 2:
Submission design



Design of
Components

Technical Documentation



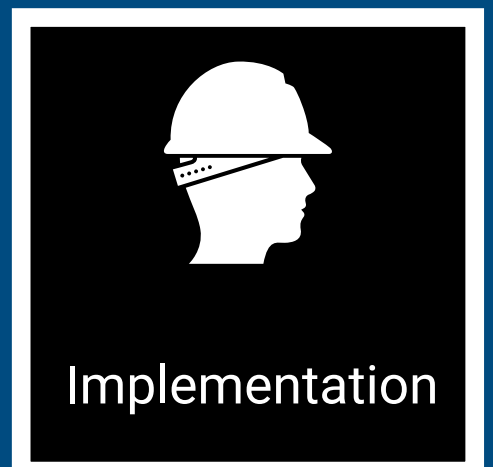
3-D
Model



Detailed
Drawings

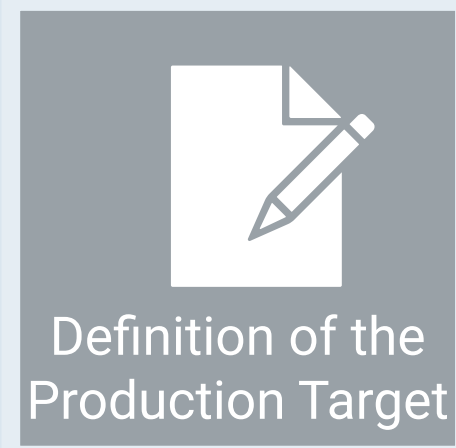


Stage 3:
Execution design &
Implementation

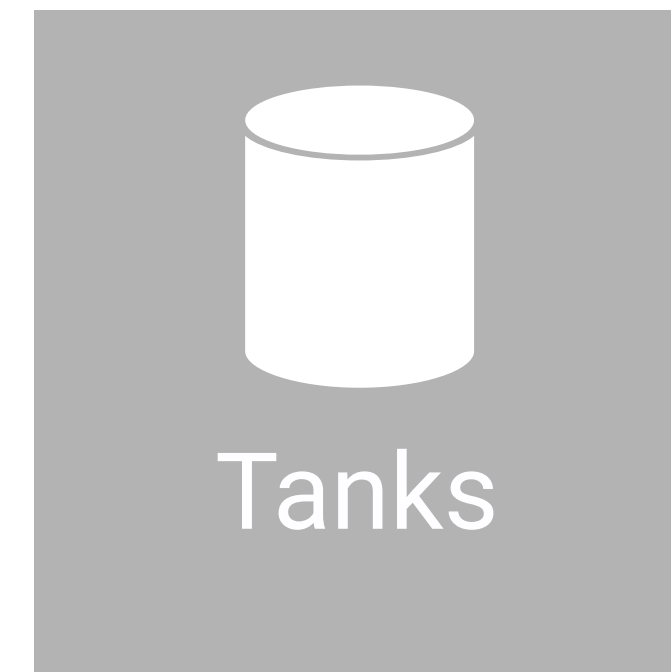
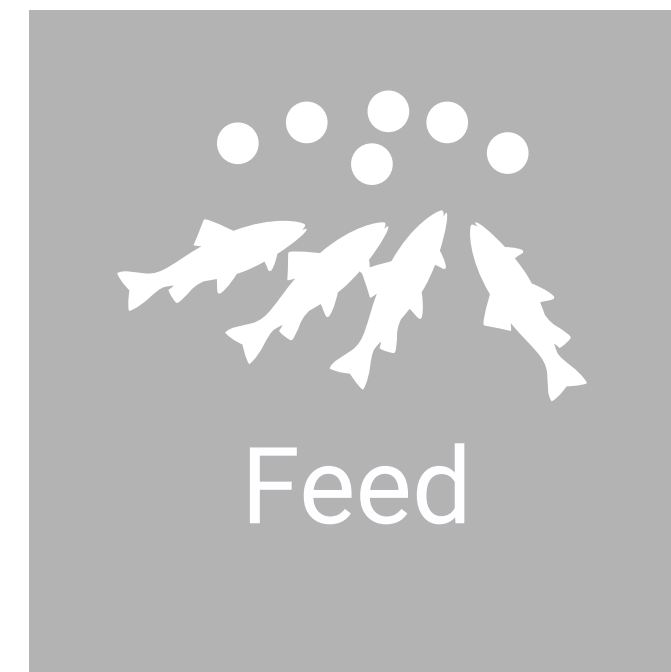
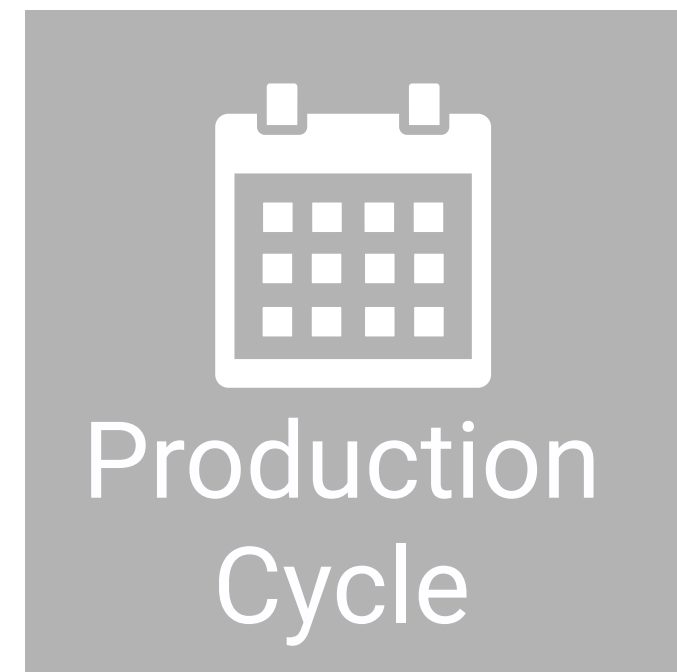


Implementation

Stage 1:
Concept &
Design



Stage 1: Definition of Production Target

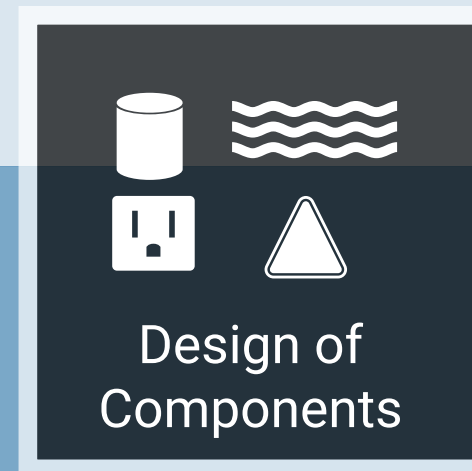


Which fish species are to be produced?
How often will the system be stocked?
Will the fish be reproduced inhouse or purchased?
How often do you want to harvest?
What market size is planned?

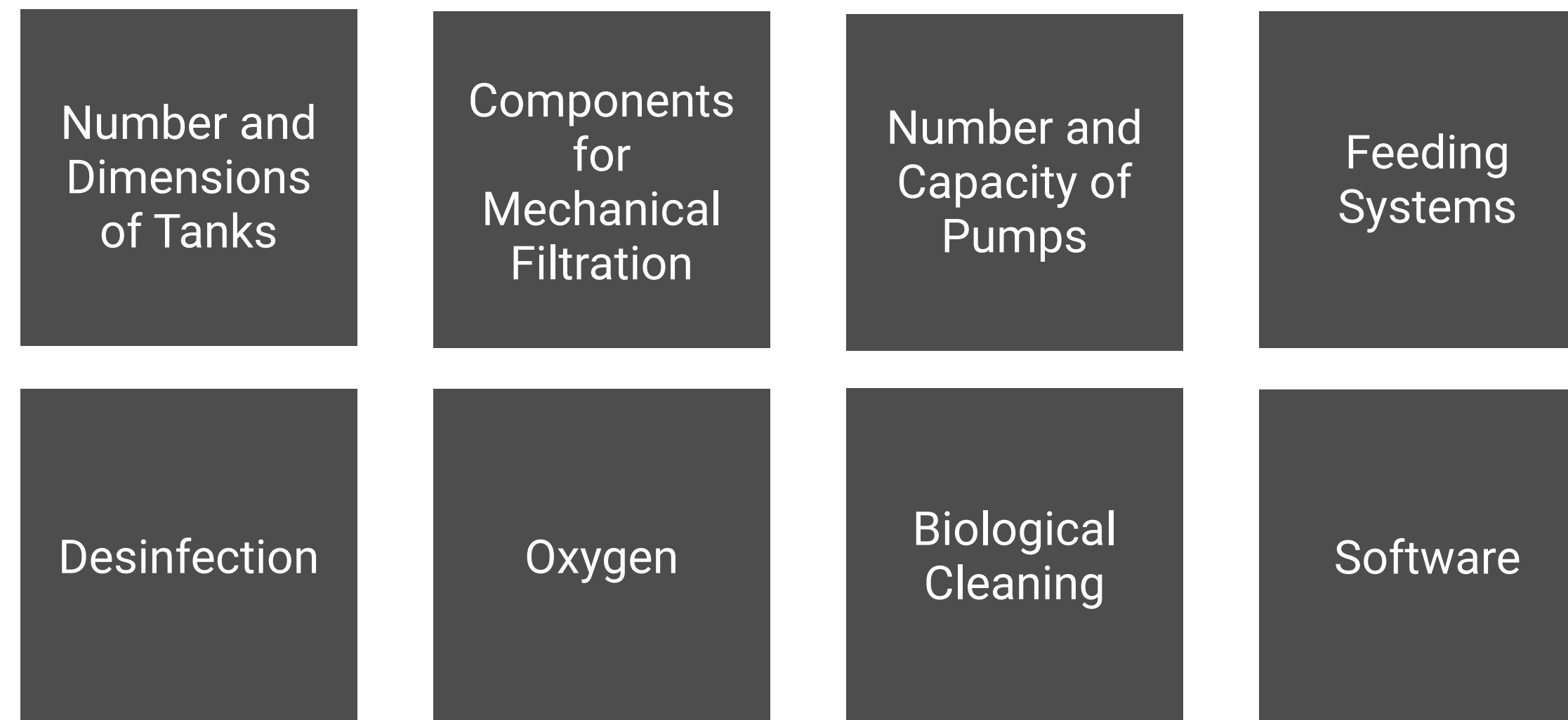
Stage 1:
Concept &
Design



Stage 2:
Submission design



Stage 1 and 2: Planning & Implementation



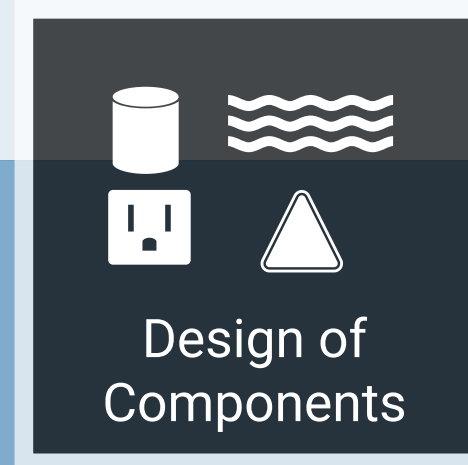
These components form the basis for the function of every fish farm - regardless of the size and type of the system.

Stage 1:
Concept &
Design



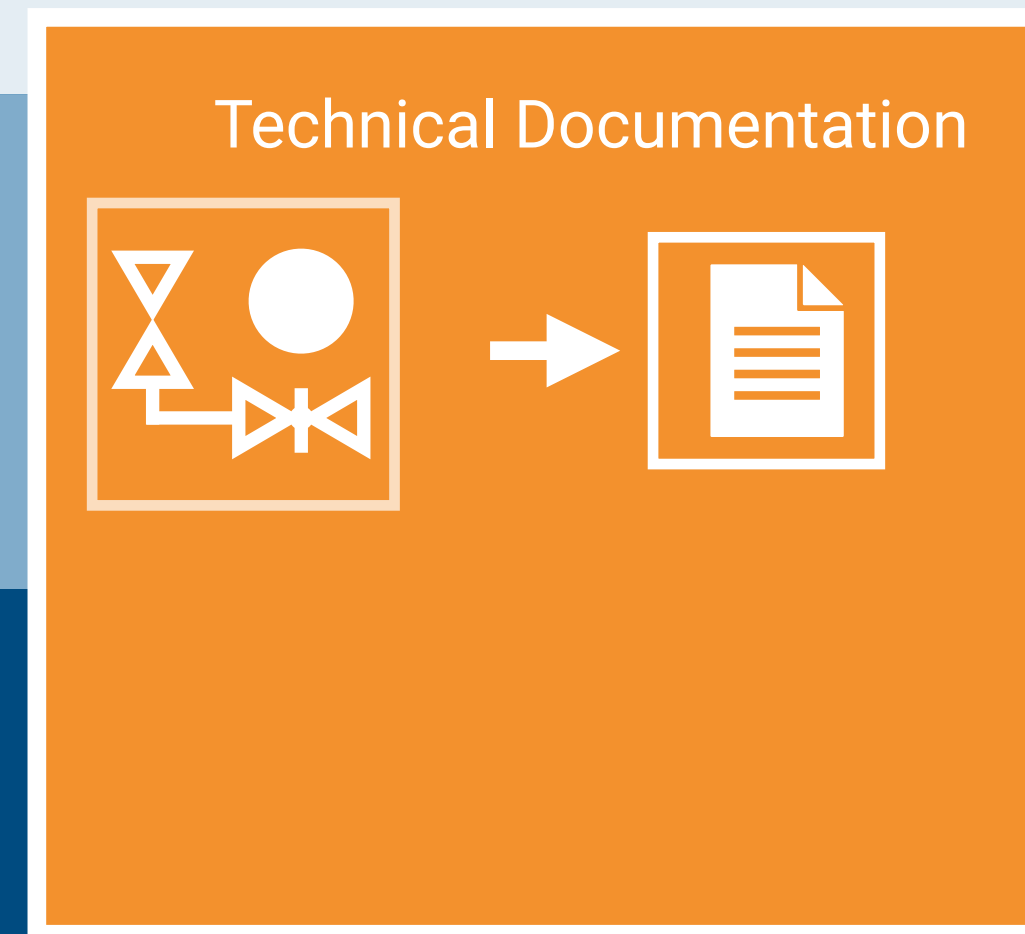
Definition of the
Production Target

Stage 2:
Submission design



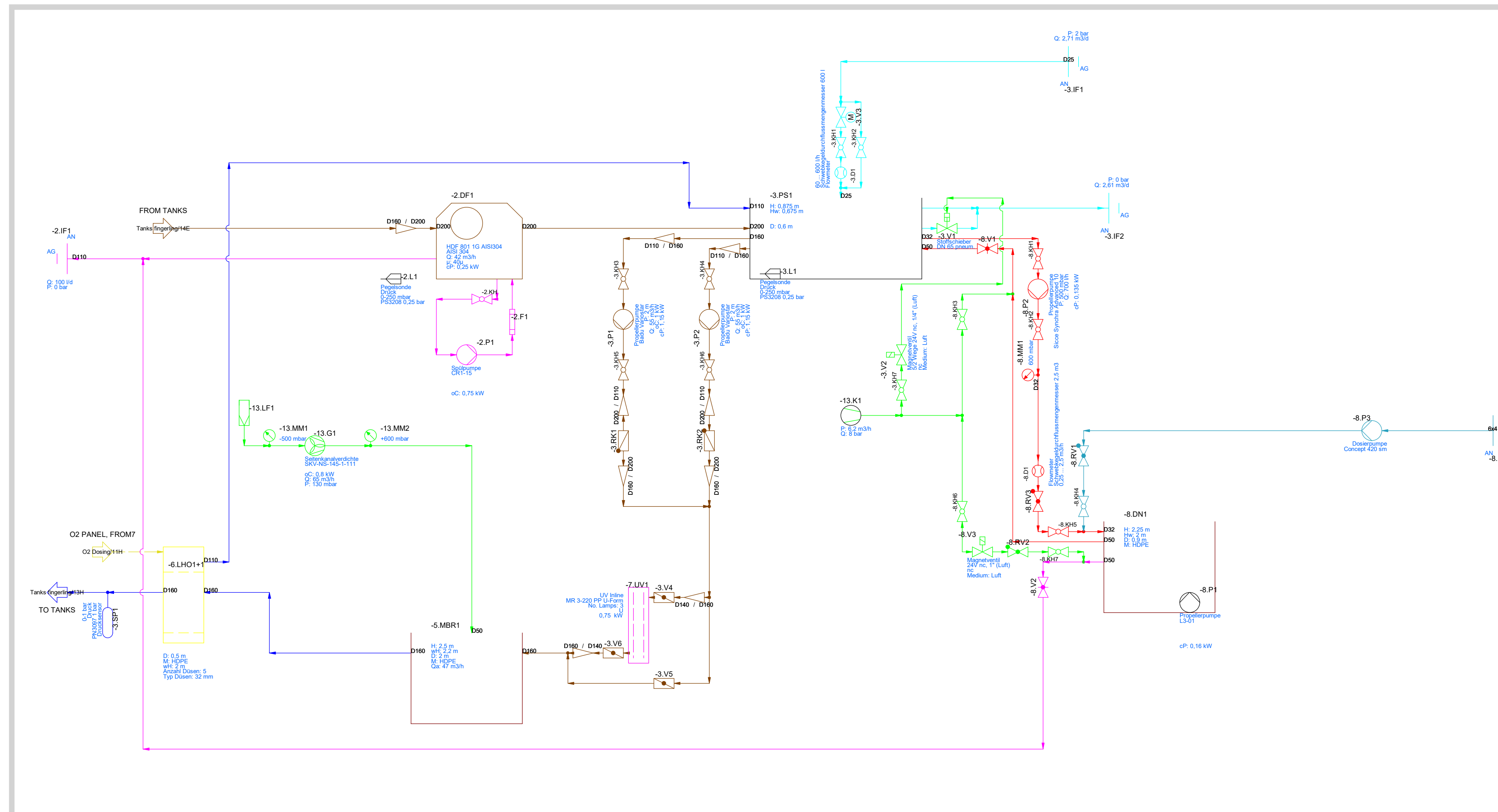
Design of
Components

Stage 3:
Execution design &
Implementation

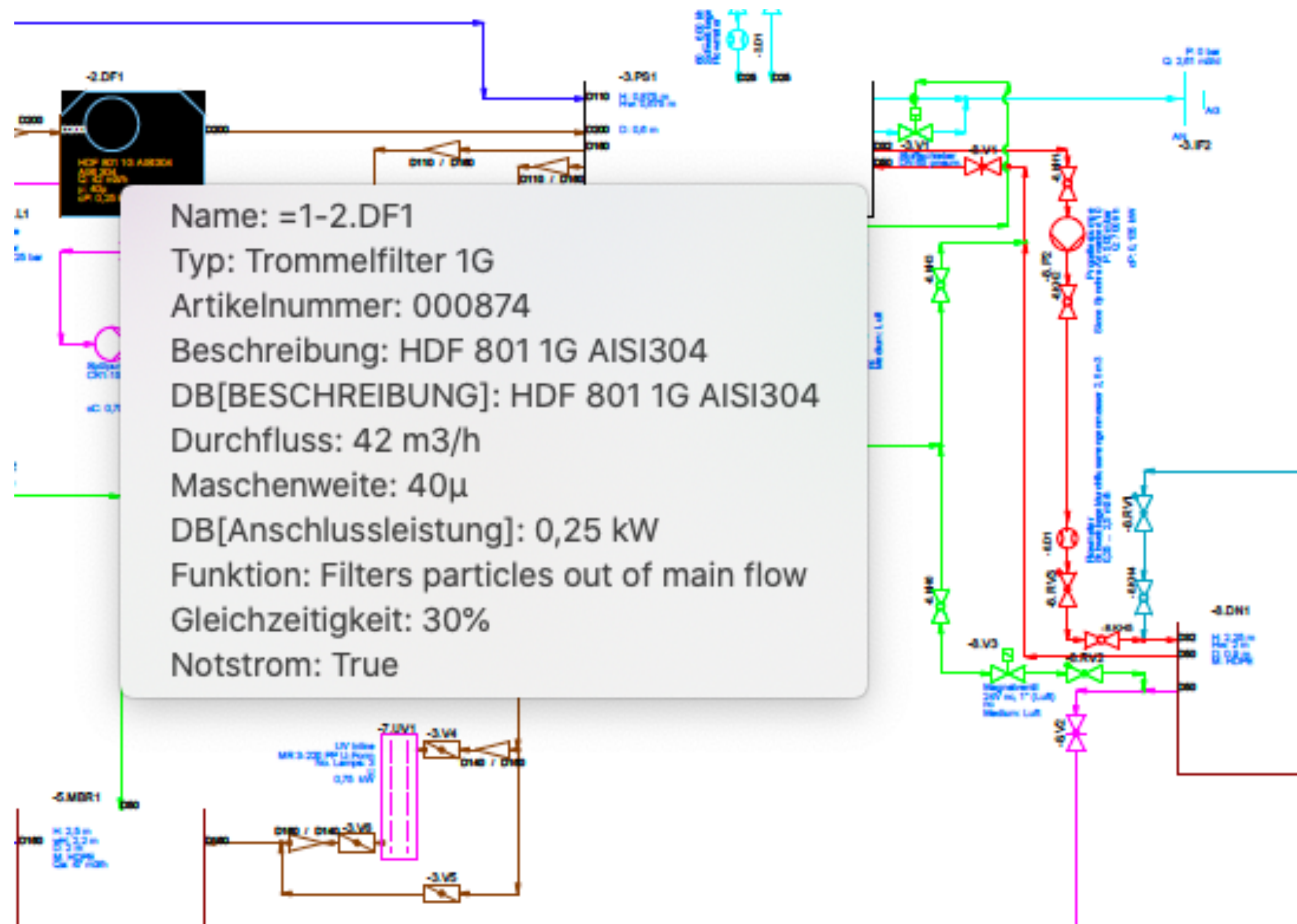


Technical Documentation

Stage 1 to 3: Technical Documentation - P & ID



Stage 1 to 3: Technical Documentation - P & ID



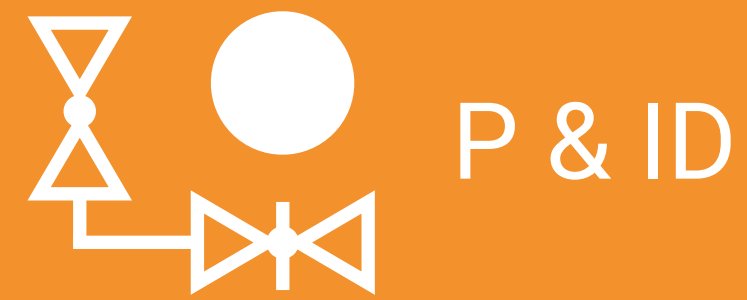
The P & ID explains the functional interconnections in the system.

It includes a link to all other relevant parts of the documentation: each unit listed has a unique ID that is referred to throughout the project.

The P & ID facilitates the ordering of spare parts, serves as documentation, supports staff training and provides immediate assistance in the event of any malfunctions.

Stage 1 to 3: Technical Documentation

P & ID - Lists and Data Sheets



List of
Features



List of
Interfaces



List of
Electric
Components



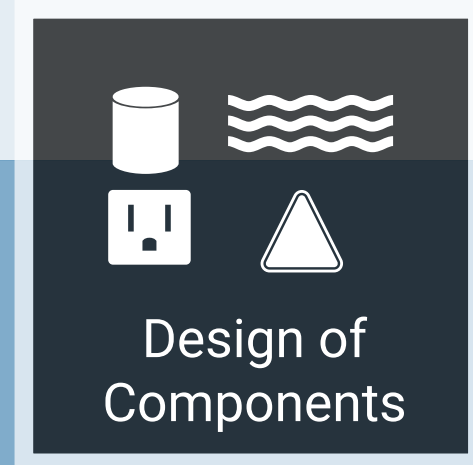
Data Sheets

Stage 1:
Concept &
Design



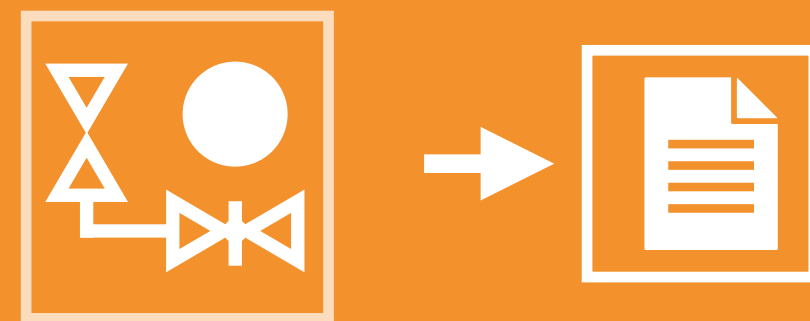
Definition of the
Production Target

Stage 2:
Submission design



Design of
Components

Technical Documentation



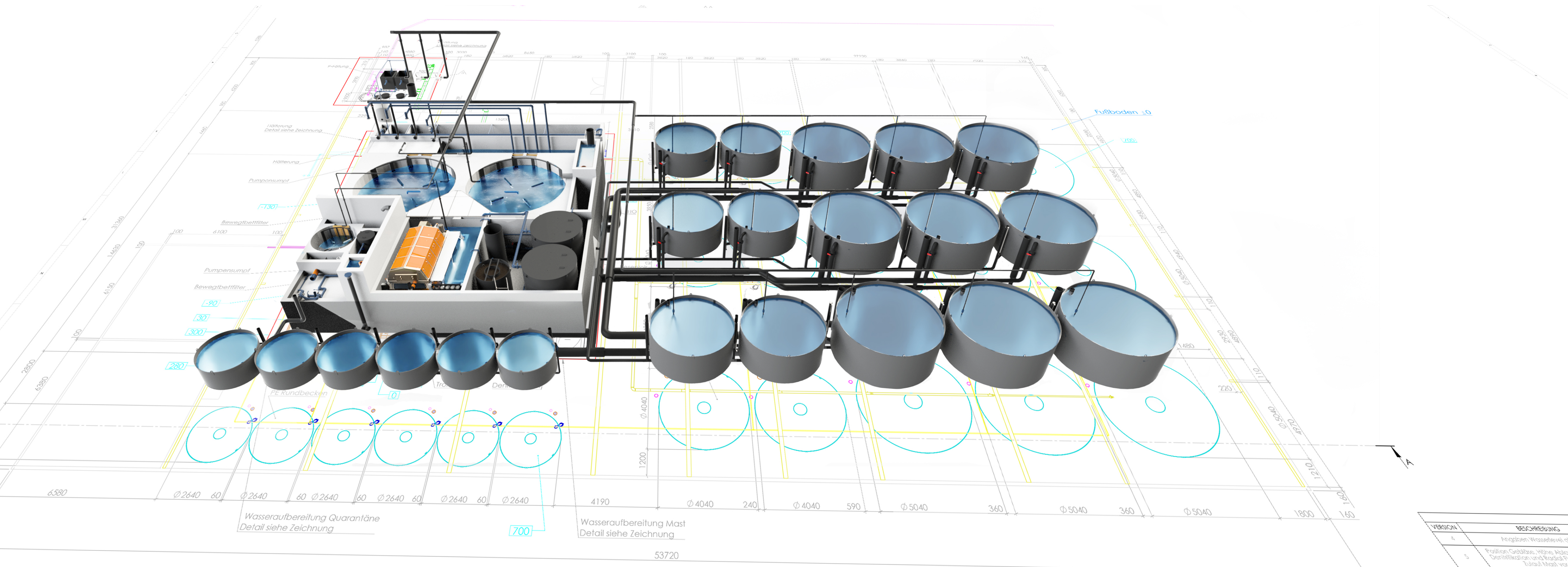
3-D
Model



Detailed
Drawings

Stage 3:
Execution design &
Implementation

Stage 1 to 3: 3-D Model



Stage 1 to 3: 3-D Model



3-D Model



General Drawing

An overview of the complete plant complex for our customer, authorities and other trades



Detailed Drawing

Detailed presentation of the components, e.g. the structure of the filter, tanks, etc.



Manufacturing Drawing

Drawings for all custom-made products made of plastic or steel



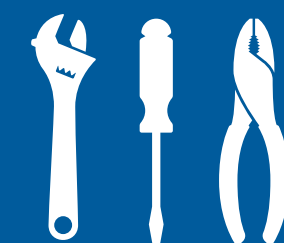
Piping Drawing

Drawings of the pipelines with parts lists and assembly instructions



Building Instruction Components

Drawings for the assembly of complex components



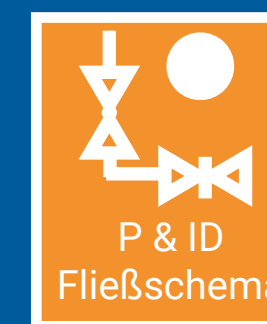
Installation Drawing



Concrete Construction



Positioning of Devices



P & ID
Fließschema

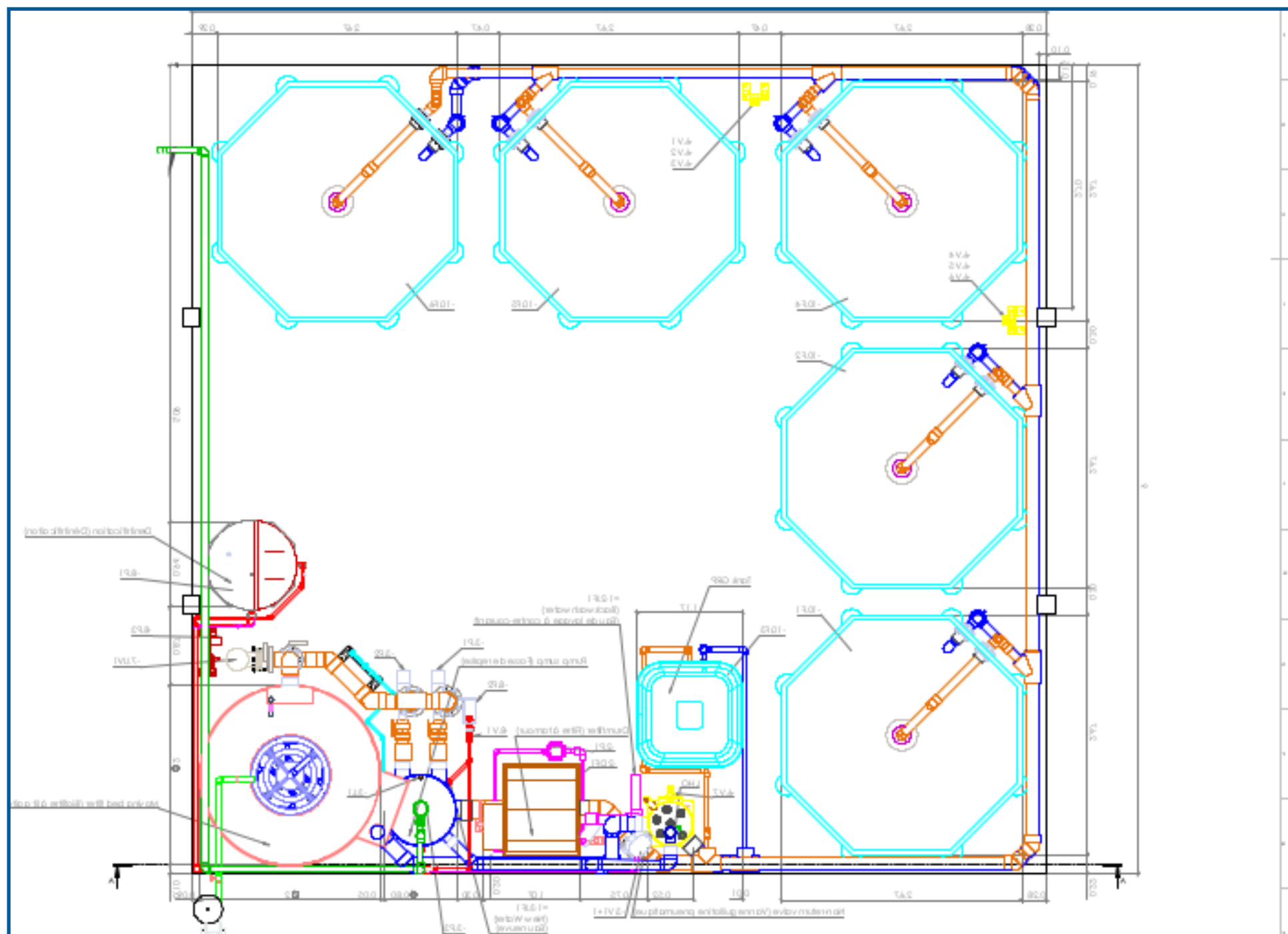


Part List

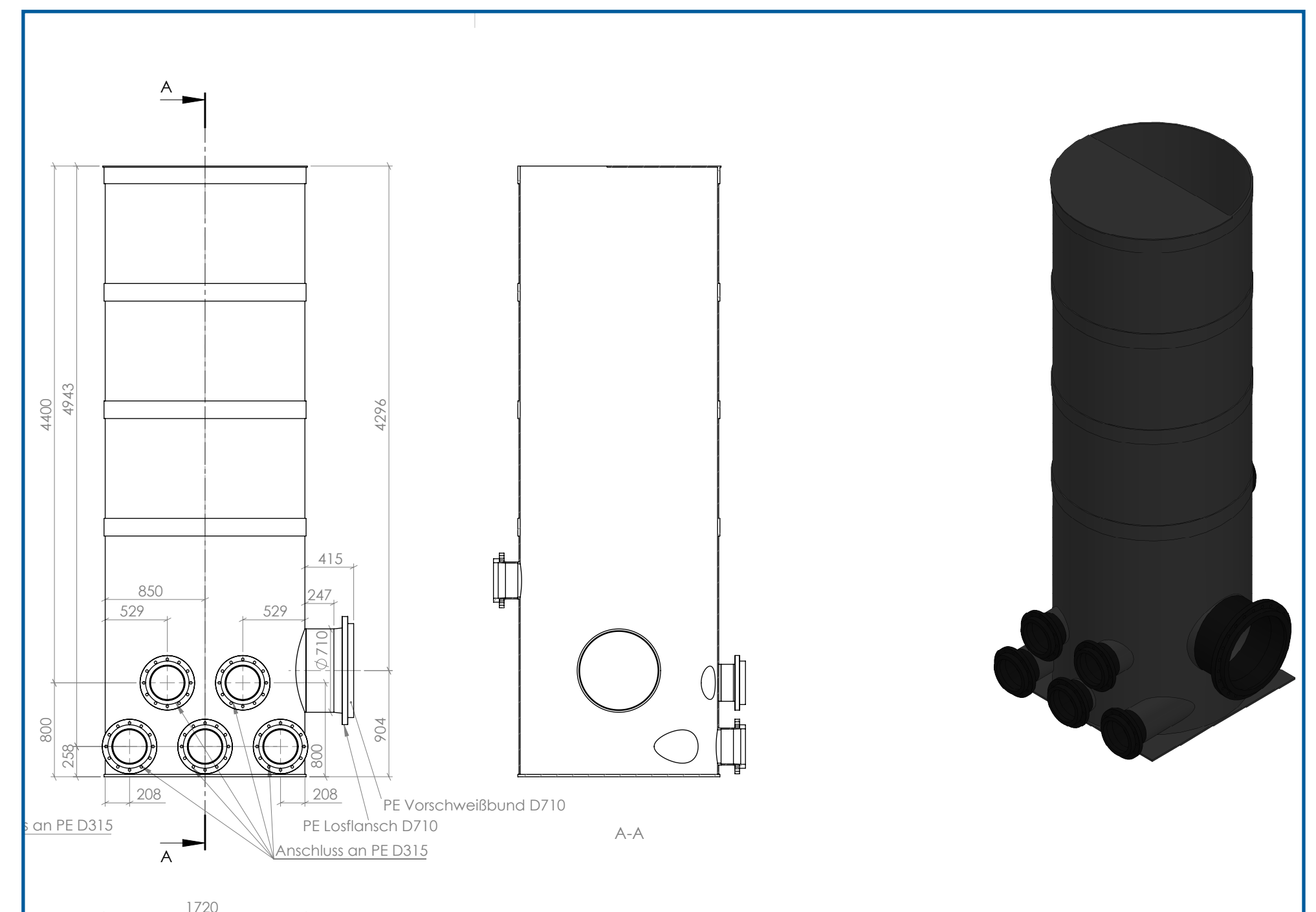
Stage 1 to 3: 3-D Model – Examples of Drawings



General Drawing



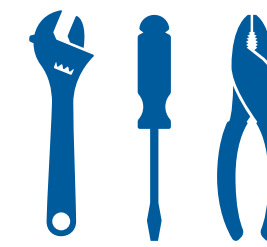
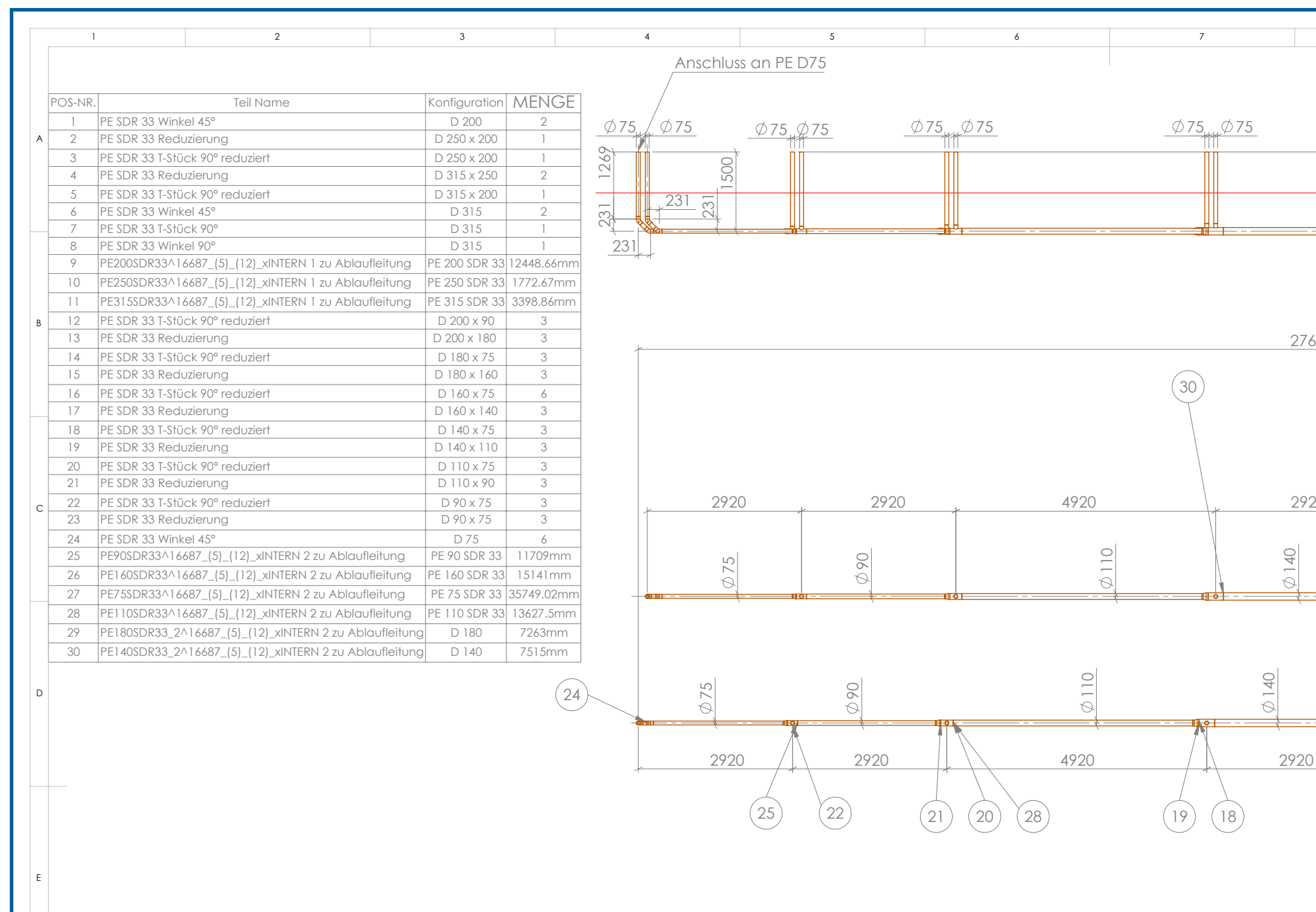
Manufacturing Drawing



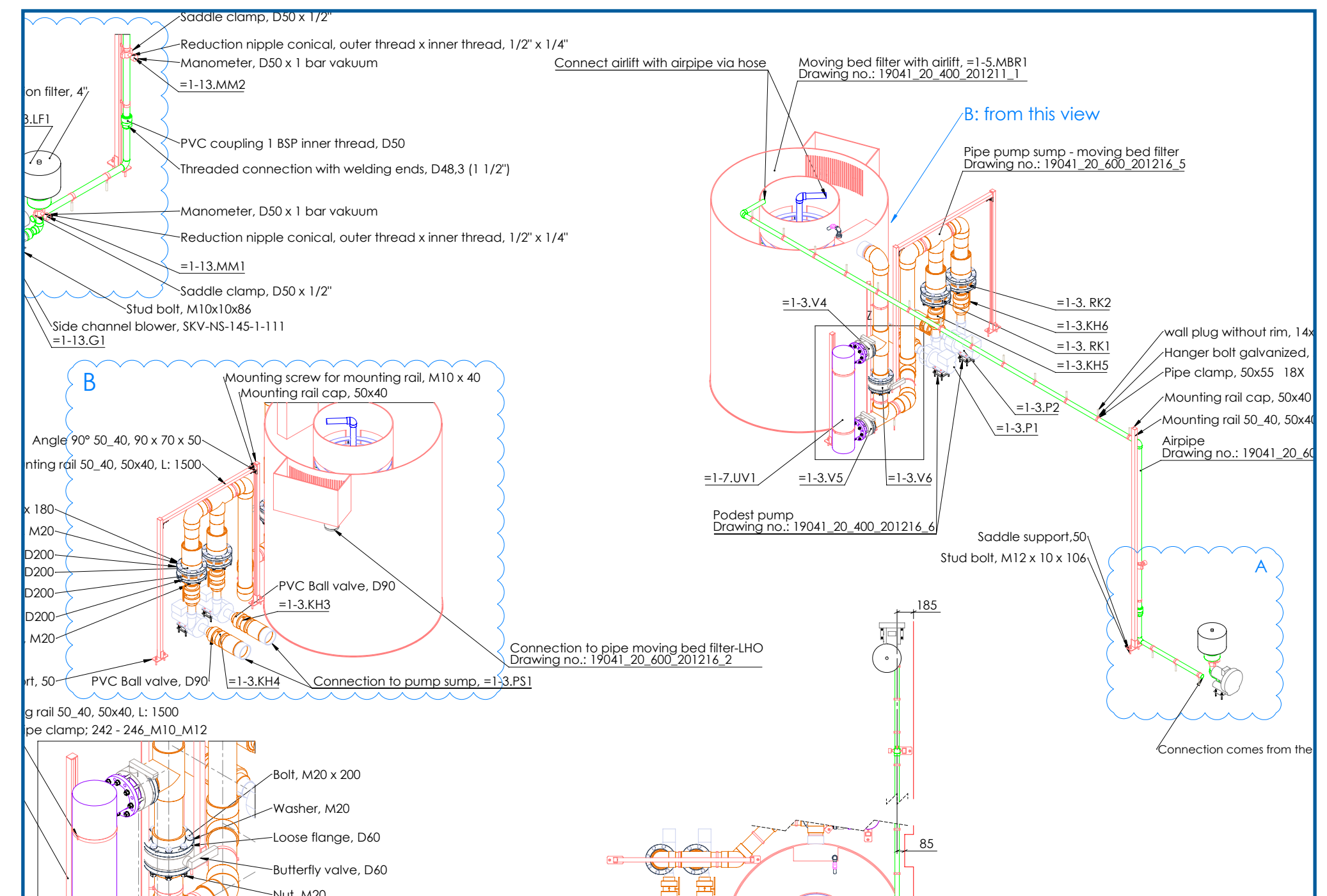
Stage 1 to 3: 3-D Model – Examples of Drawings



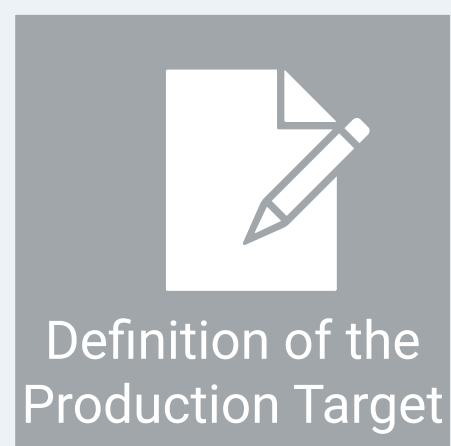
Piping Drawing



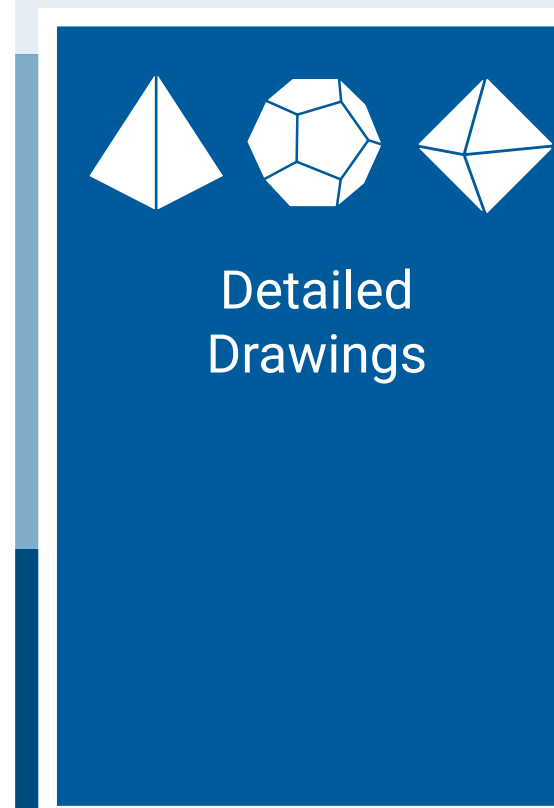
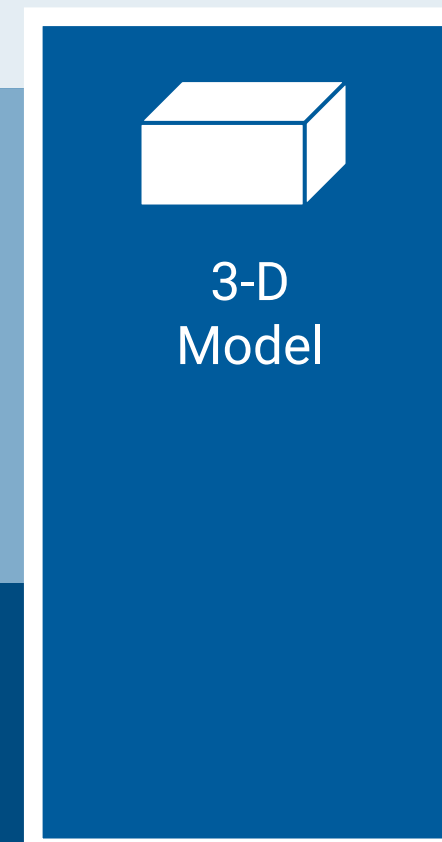
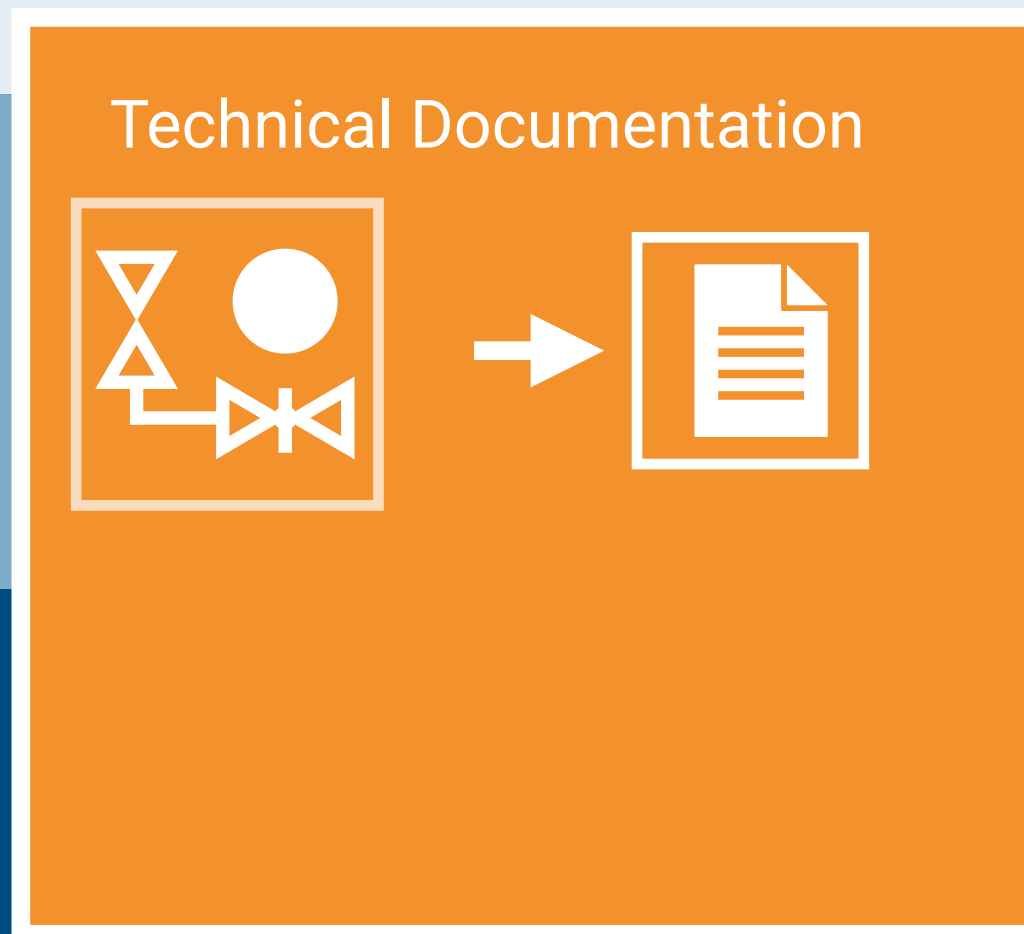
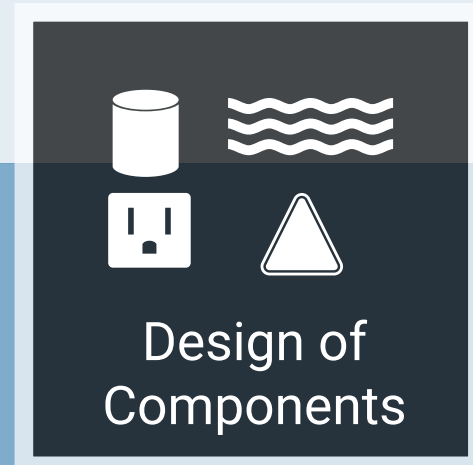
Installation Drawing



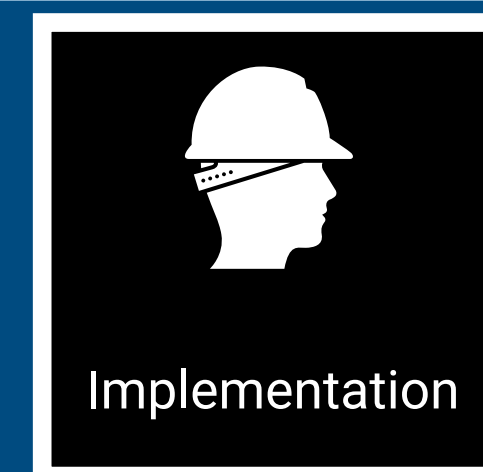
Stage 1:
Concept &
Design



Stage 2:
Submission design

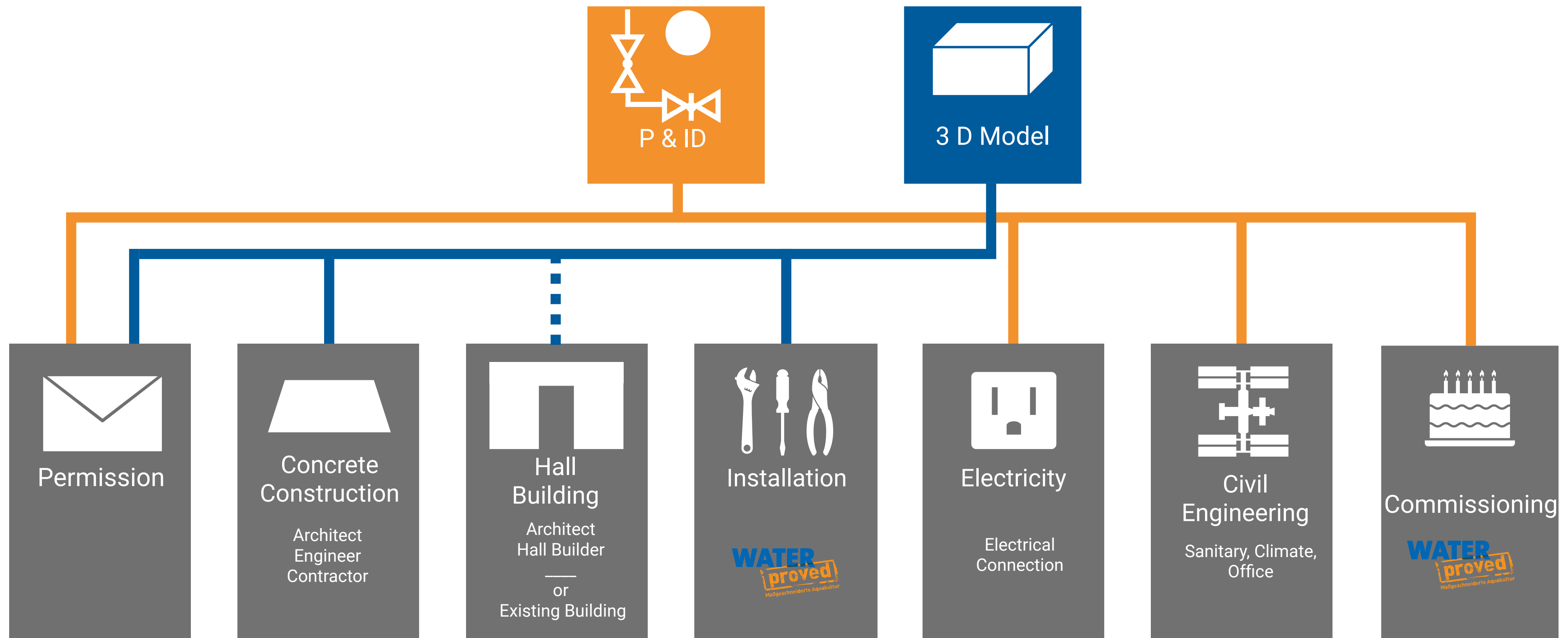


Stage 3:
Execution design &
Implementation



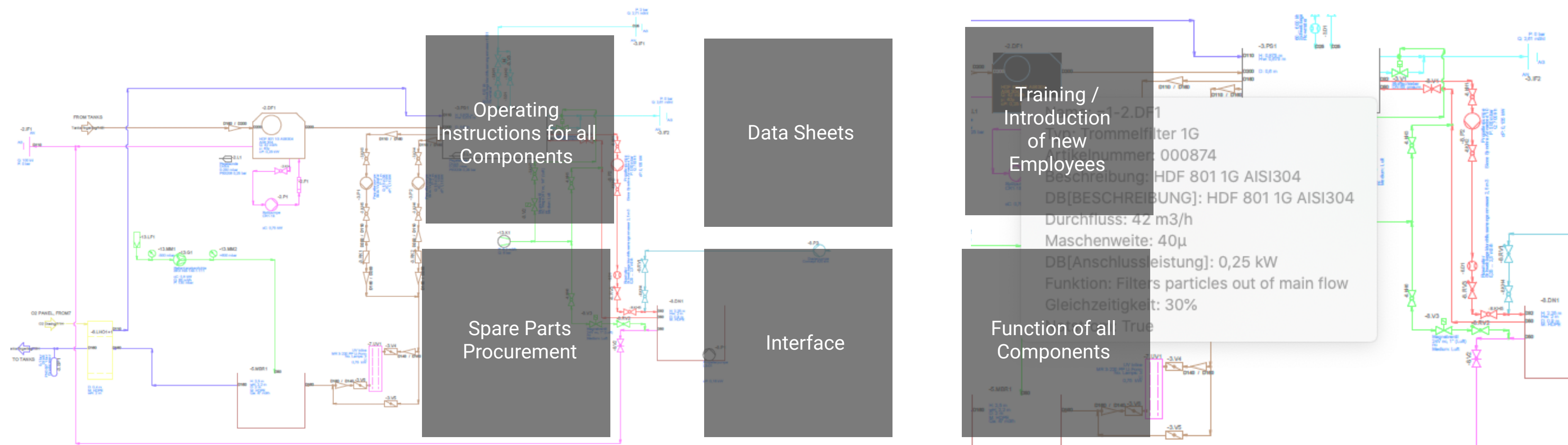
Stage 3: Implementation

Our planning includes all the data and documents required for the realisation of your project:



WATER – proved Plant in Day-to-Day Operation

Our design and the technical documentation is an investment in the future. It is the basis for long-term, independent operation of a plant. All important information is just a mouse click away: operating manuals from all manufacturers, circuit diagrams, drawings and data sheets. All components of the plant are labelled according to the P & ID. New employees or a holiday replacement can learn the function of a valve, pump, etc. immediately. The same applies to our control system. Of course, all stored data and lists are permanently updated by us.



WATER – proved GmbH

Gustav-Weißkopf-Straße 12
90768 Fürth / Germany

Tel.: +49 911/2001-830

Fax: +49 911/2001-835

Mail: info@water-proved.de

